

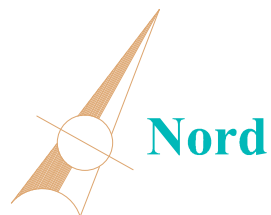


SOCIETE IMMOBILIERE DALIA
RESIDENCE DALIA

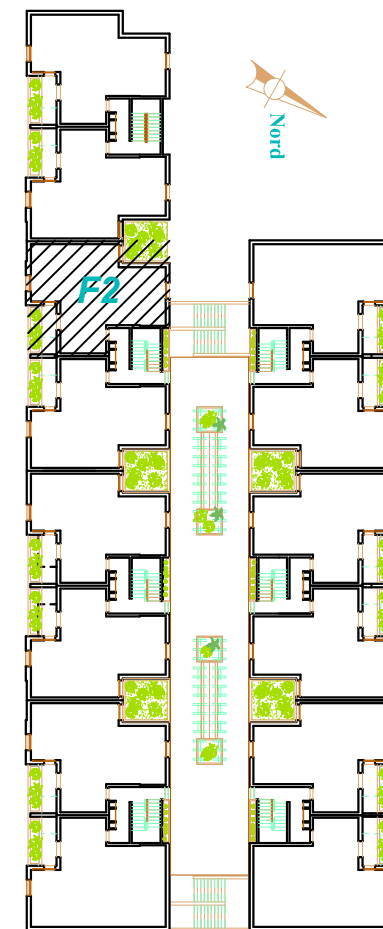
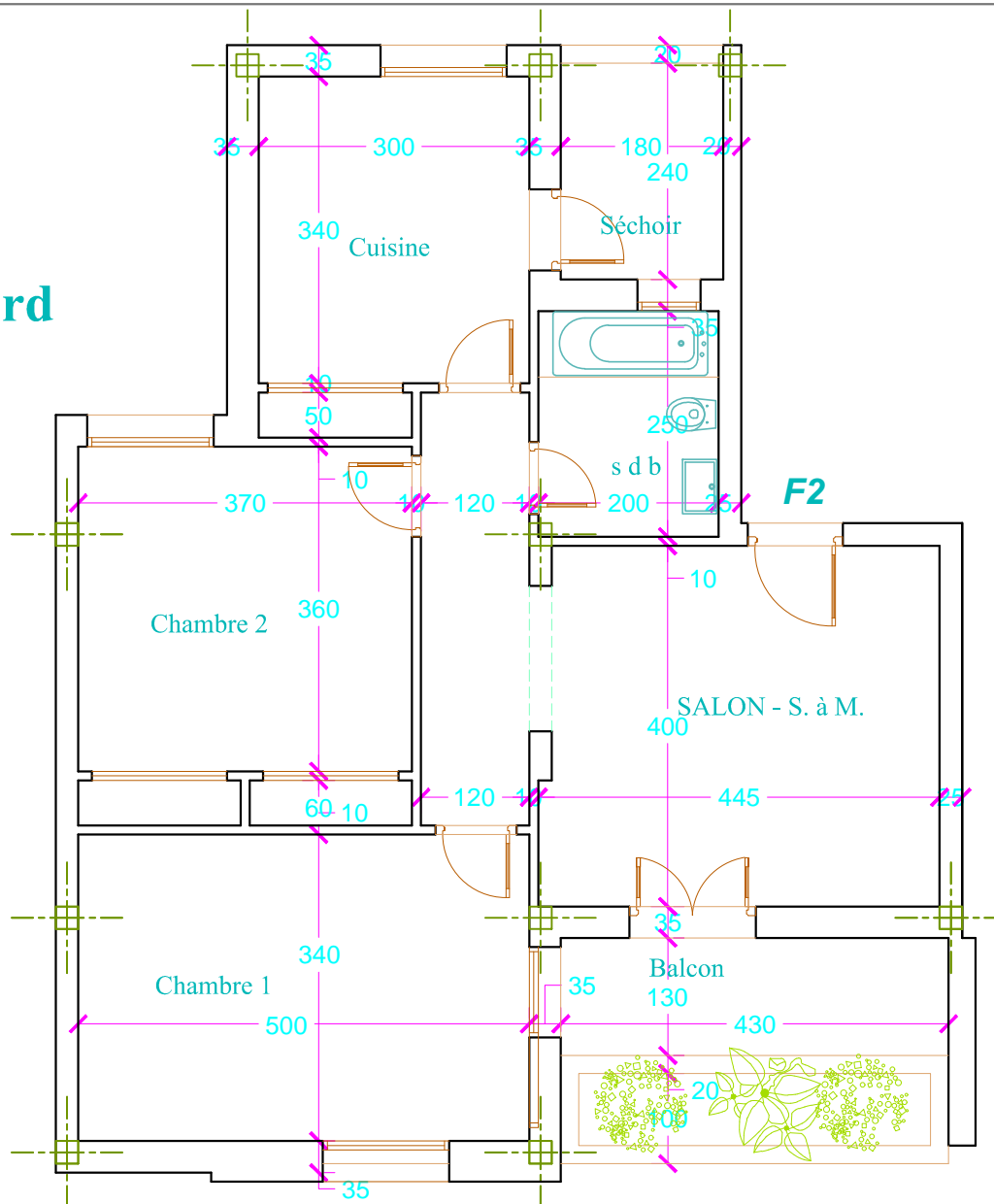
**CONSTRUCTION D'ENSEMBLE
RESIDENTIEL ET COMMERCIAL**
sis à **EZZAHROUNI**

| | |
|------------------|------|
| TYPE DE LOGEMENT | APPT |
| NIVEAUX | 1er |
| BLOC | F |

F.0.2



Nord



| |
|-------------------------|
| Désignation |
| Surface Plancher |

| |
|------------------------------|
| Surface(m2) approximative |
| 130 m² |